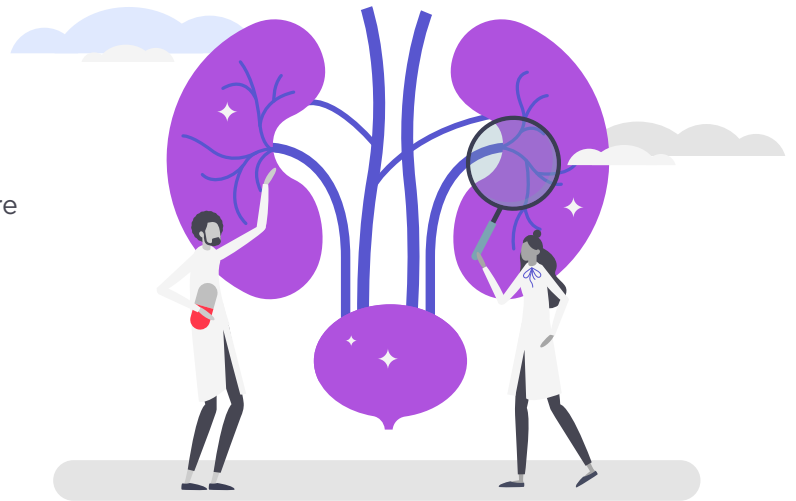


# Using eConsults to Support Urology Needs in Primary Care

eConsults are an effective way to improve the quality of care for urology patients.

## In a primary care setting, eConsults can be used to:

- Reduce unnecessary costs by streamlining care
- Enhance the quality of comprehensive care
- Determine whether additional testing or follow-up is needed based on the patient's history or test results
- Provide follow-up recommendations for developing treatment plans, surveillance, and overall wellness



## See how our Primary Care Partners have used RubiconMD to help their patients:

### General

79-year-old male with past medical history of nephrolithiasis here for follow-up. He recently had a CT scan that showed a 1.2 cm nonobstructive stone on the lower pole of the left kidney. He denies any symptoms. He states that he prefers to have lithotripsy or a procedure to remove the stone as he feels like if he does not get it now and it causes him problems later in life he may be too old to have any procedures.

**Question:** What is your recommendation?

### Elevated PSA

61-year-old male c/o urinary urgency. UA positive for leukocyte esterase and WBCs 6-10. PSA total 8; PSA Free .65; PSA% Free 8.

**Question:** What are the next best steps?

### Male Reproductive Medicine

53-year-old male c/o ED x 2 months. Difficulty developing and keeping an erection. Testosterone level in 500s (repeat level drawn today along with other labs). PSA WNL. Taking Gemfibrozil only. 1 ppd smoker, obesity, borderline hypertension, prediabetes. He has tried Cialis and Viagra and states neither helped at all. It has been 2 months trying meds and he is frustrated.

**Question:** What should be my first workup for this patient with ED? Is there anything specific to this patient I should do?