

# eConsult User Guide

2023



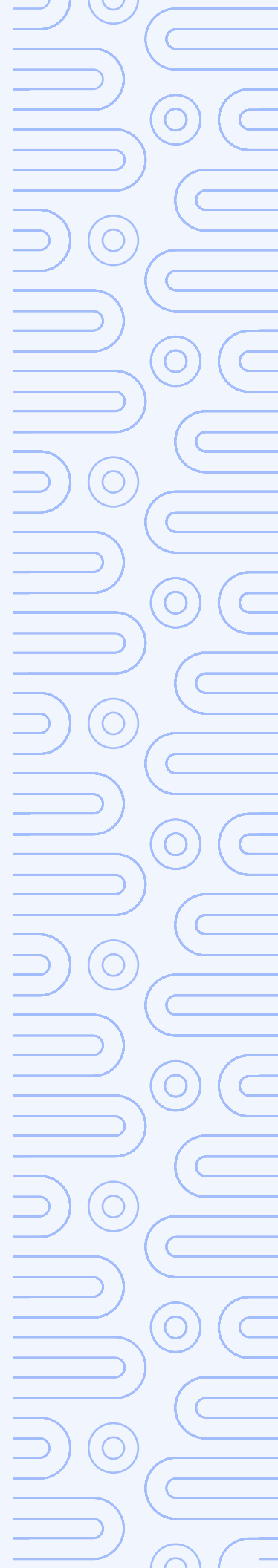
# Contents

[About RubiconMD eConsults](#)

[What eConsults Do For You](#)

[How to Submit an eConsult](#)

[Using the CameraApp](#)





# Welcome!

We're excited to begin partnering with you to deliver specialist insights to your patients! This comprehensive user guide will help get you started on the RubiconMD platform so you can begin successfully submitting eConsults.

## About RubiconMD eConsults

Empower clinical decision-making and diagnoses with a convenient, expert eConsult software and service platform. With same-day access to board-certified specialists, you can deliver an elevated primary care experience.

## What is an eConsult?

eConsults are secure, online conversations between you and board-certified, top US-based specialist.

## How it works

1

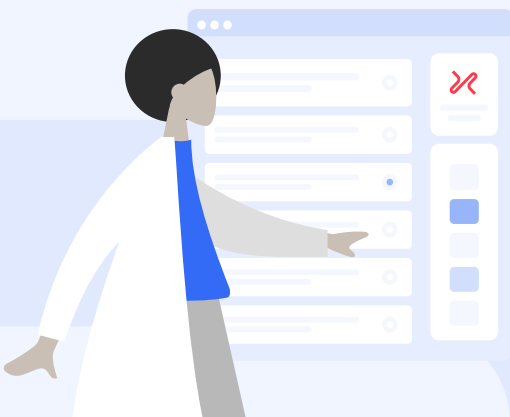
The clinician submits a question in the RubiconMD platform.

2

RubiconMD specialist responds within a few hours and answers any follow-up questions.

3

The clinician uses eConsult insights to inform the patient care plan, treat in place and avoids an unnecessary referral **>70%** of the time.





# What eConsults Do For You

RubiconMD enables primary care clinicians like you to access specialist insights with our eConsults.

Our eConsults are a resource for you to:



Get feedback on a differential diagnosis or care plan



Gain insight on an interim care plan while a patient waits for a specialist appointment



Help interpret a lab test or diagnostic result



Improve the quality of referrals (if they are necessary and/or if the referral is to the correct specialty)

**140+**

specialties and sub-specialties

**80%**

of eConsults improve the care plan

**~70%**

avoid unnecessary referrals

**3 hours**

average response from specialist

**Up to \$500**

savings per consult



# How to Submit an eConsult

## ACTIVATING YOUR ACCOUNT:

1. Go to [rubiconmd.com/activate](https://www.rubiconmd.com/activate)
2. Type in your clinic email in order to receive a password setup email
3. Go into your clinic email, click activate your account, and set a password
4. Login using your new credentials

- 1 Log into:  
<https://www.rubiconmd.com>

★ We suggest bookmarking the eConsult submission page for quick and easy access!

Expert insights. Better care.

Email address

Password

Show password [Forgot password](#)

Log in

First time logging in? [Activate your account](#)

[Terms of service](#) | [Privacy](#)

- 2

  1. Create a new eConsult
  2. Choose a specialty for your eConsult submission

First, choose a specialty.

Get started below by selecting the specialty you're submitting to.

Choose a specialty for this eConsult

Select one

Or select from our most common specialties

Cardiology COVID-19 Dermatology Endocrinology

Gastroenterology Hematology / Oncology Pediatrics

Not sure what specialty you want to submit to?

[View all RubiconMD specialties >](#)

Cancel Next



3

1. Post your question for the specialist clearly and concisely—the clearer the question, the better the specialist response.

2. Fill out the patient's relevant medical history, including:

- Relevant PMH, PSH, meds, allergies
- Presenting complaints, symptoms, physical exam findings
- Relevant diagnostics and photos (labs, imaging)
- Social barriers (cost, site of care, access to refrigeration, family support)
- Full patient history, multiple progress notes, or past results are not necessary

3. Outline your anticipated assessment and plan

4. Fill out identifying patient information as applicable

5. Submit your eConsult

4

Next, you'll receive an email notification of your specialist's response to your eConsult.

Navigate back to the RubiconMD eConsult platform to view their response.

The screenshot shows a web form for submitting an eConsult. The form is titled "How can a specialist help?" and contains several sections:

- Question:** A text input field.
- Assessment/Plan:** A text input field.
- Background - Optional:** A larger text area with an "Add Attachments" button.
- Patient:** A section for patient information with a note: "Patient identifying information is not shown to the specialist."
  - Name - Optional:** Two input fields for "First" and "Last" names.
  - Date of Birth:** An input field with a placeholder "00/00/0000".
  - Sex:** A dropdown menu.
  - Identifier (eg. MRN):** An input field.
- Submit eConsult:** A large blue button at the bottom with a checkmark icon.



- 5 **1.** Review the specialist's response to your eConsult. If you'd like to continue the consultation you can choose to send a follow-up.
- 2.** If you'd like insight from additional specialists, you can choose to ask another specialty or get a second opinion.

**Elissa Steamer MD** Feb 10  
RubiconMD

I would make the furosemide as needed for dyspnea/weight gain and keep the entresto and coreg at current dosing unless the BP continues to be at the low end causing issues. This would also help the most with his orthostatic issues if tolerated. Thank you for using RubiconMD. Definitely let me know if I didn't answer your question.

**Continue this consultation?**  
Provide additional information or ask a question  
[Send follow up](#)

**All done!**  
Mark this eConsult as reviewed to remove it from your taskbox  
[Mark as reviewed](#)

**Consultation**

Want more insight? [Ask another Specialty](#) or [Get a second opinion](#)

**Terry Kennedy** Feb 10  
Given his age, comorbidities, and fall history, I would like to decrease some of his bp meds. Can you advise which med would be best to decrease and in general how you approach orthostatic hypotension picture with combined systolic-diastolic hf in older adults?

**Elissa Steamer MD** Feb 10  
RubiconMD

I would make the furosemide as needed for dyspnea/weight gain and keep the entresto and coreg at current dosing unless the BP continues to be at the low end causing issues. This would also help the most with his orthostatic issues if tolerated. Thank you for using RubiconMD. Definitely let me know if I didn't answer your question.

## 6 Mark your consult as reviewed:

The ability to review your eConsult will appear in the bottom right-hand corner of your screen, directly beneath the specialist response as seen below:

- 1.** Rate specialist response (1-5 stars)
- 2.** Tell us how the eConsult helped you by checking the boxes next to all that apply, then provide additional feedback (optional).
- 3.** Select "Mark as Reviewed"

**Mark eConsult as Reviewed**

How was your consultation?  
★★★★★ Good

This eConsult helped me

<input type="checkbox"/> Avoid a referral	<input type="checkbox"/> Screen for a condition
<input type="checkbox"/> Avoid diagnostics/procedures	<input type="checkbox"/> Diagnose and assess a condition
<input type="checkbox"/> Improve the patient care plan	<input type="checkbox"/> Manage, treat, or counsel a patient
<input type="checkbox"/> Learn something new	<input type="checkbox"/> Use or navigate resources to deliver care

Additional Feedback - Optional

[Cancel](#) [Mark as Reviewed](#)



# Using the Camera App

Our HIPAA-compliant Camera application for Apple and Android devices supports adding attachments to any of our eConsults.

- 1 Download the RubiconMD Camera App from the App Store (iOS) or the Google Play (Android)
- 2 Start your eConsult as you normally would from your desktop or mobile browser. When you're ready to add an attachment, select "Add attachment"



- 3
  1. Select the option to "Add from another device"
  2. Generate a one-time 4-digit PIN

**How can a specialist help?**

Question

Assessment/Plan

Background - Optional

Add Attachments

**Add Attachments** ×

PNG, JPG, TIFF, and PDFs up to 20 pages are supported

Drop files here or [click here to select](#)

**Add from your mobile device** ∨

Download our RubiconMD Camera App or go to [rubiconmd.com/add](https://rubiconmd.com/add) to attach photos

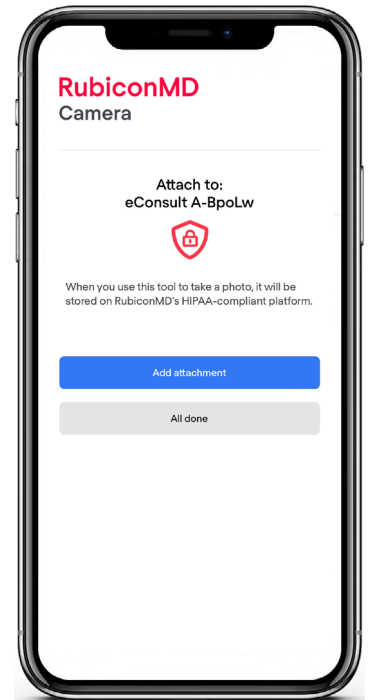
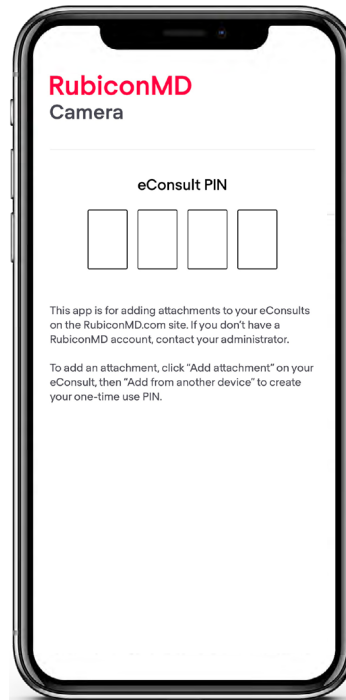
**1 9 4 0**

Your temporary PIN  
Expires in 4:44





- 4
1. Grab your mobile device and open the RubiconMD Camera App
  2. Enter the 4-digit PIN and add your photo
  3. When you see it successfully uploaded, select "All done", then return to your desktop or mobile device to submit your eConsult



## Additional Helpful eConsult Resources



Learning Center >



Case Library >



Blog >