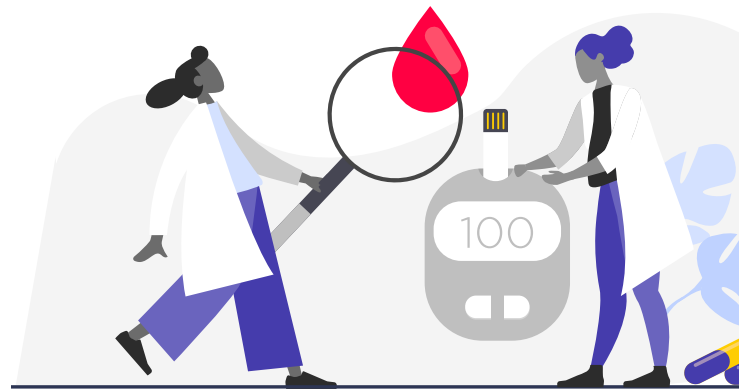


Using eConsults to Support Comprehensive Diabetes Care Quality Metrics

Improving quality of care for diabetes patients is critically important. Left unmanaged, diabetes can lead to serious complications, including heart disease, stroke, hypertension, blindness, kidney disease, diseases of the nervous system, amputations and premature death.



Quality measures for diabetes patients 18 to 75 years of age should have each of the following

- ✓ HbA1c testing
- ✓ HbA1c control (A1c <8)
- ✓ Retinal eye exam
- ✓ Blood pressure control (<140/90)
- ✓ Medical attention for nephropathy

In a primary care setting, eConsults can be used to gain insights and improve comprehensive diabetes care quality metrics by:

- Improving access to comprehensive care
- Reducing unnecessary costs and gaps in care
- Enhancing the interpretation of diagnostic tests
- Providing routine medical care such as lab tests, physical exams, medications, as well as preventative and ongoing surveillance
- Providing alternative medication regimens and therapies



eConsult Diabetes Management Case Examples:

Uncontrolled Diabetes

52-year-old hispanic obese female with A1c of 11. PMH significant for HTN and Hyperlipidemia. Currently only taking metformin 500mg BID. Fasting glucose 240.

Question: What medication options would you recommend to be added to her regimen?

.....

Complex & Non-Compliant

42-year-old male patient recently discharged from the hospital with dx of DM insulin-dependent. He has not been compliant with Lantus 63 units and ran out of insulin approx 5 days prior. He was placed on 36 units of Lantus and a sliding scale of analog insulin 140-170 1 unit 171-200 2 units 201 -230 3 units and so forth. He is on patient assistance with Lantus through the manufacturer.

Question: How would you adjust his insulin at this point? Any thoughts on other tx?

.....

Diabetic Retinopathy

67-year-old male with PMH of type 2 diabetes, presents today with R eye pain and R sided head pressure as well as worsening blurry vision and reporting floaters. In the office, we did a RetineVue and showed proliferative diabetic retinopathy. *Attach diagnostic results - using our attachment feature*

Question: I placed an urgent referral to ophthalmology, but it still takes time to go through. Do you have any guidance on anything that can be done at the primary care clinic?